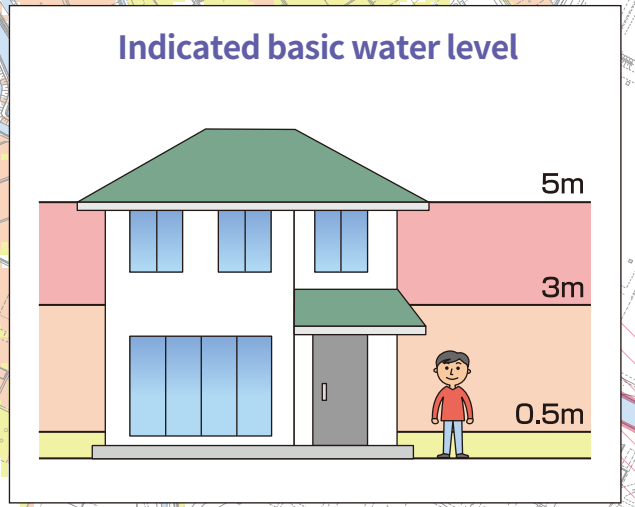
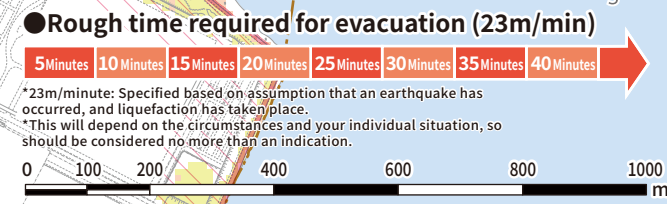
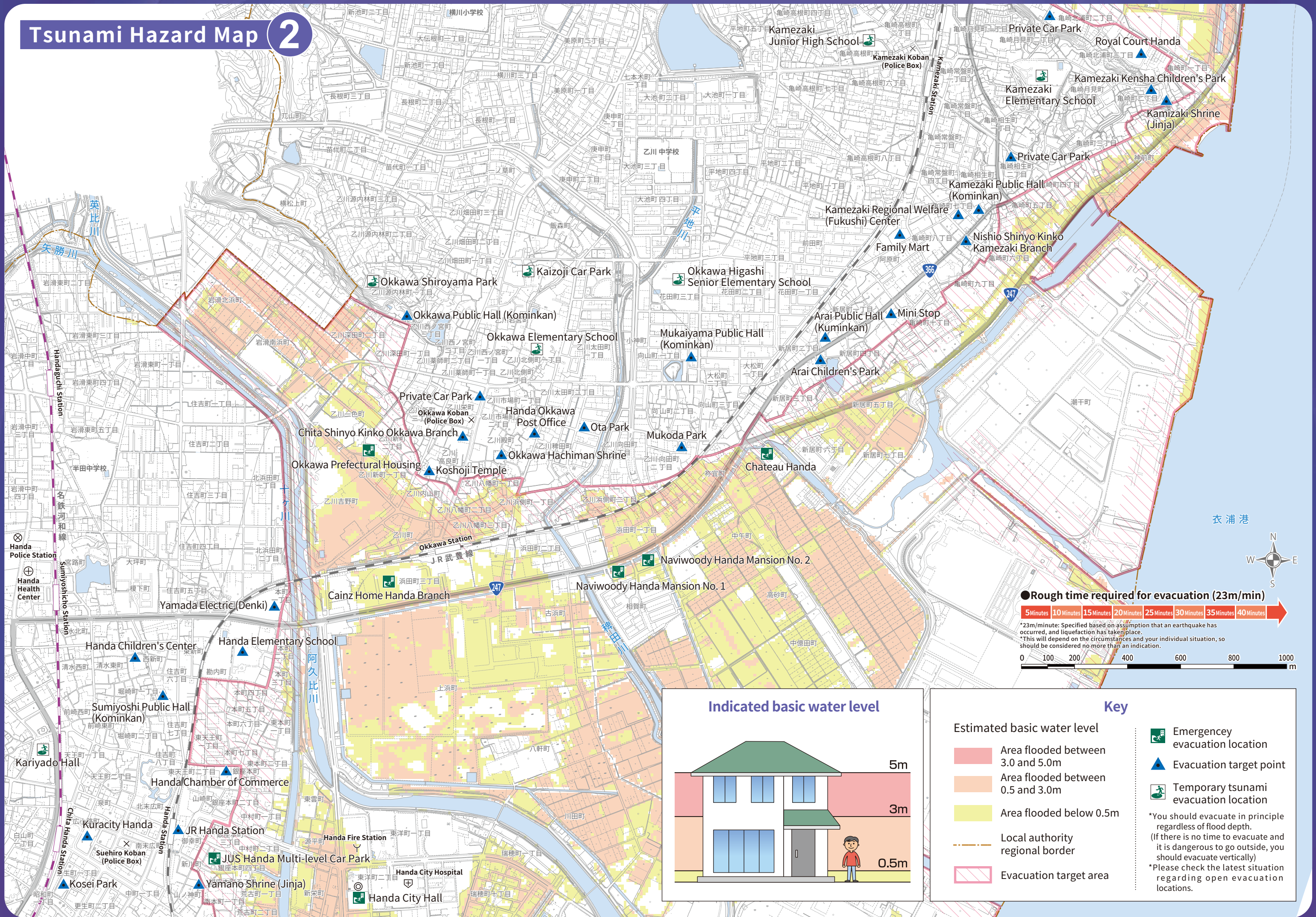


Tsunami Hazard Map 2



Key

- Estimated basic water level
 - Area flooded between 3.0 and 5.0m
 - Area flooded between 0.5 and 3.0m
 - Area flooded below 0.5m
- Local authority regional border
- Evacuation target area
- Emergency evacuation location
- Evacuation target point
- Temporary tsunami evacuation location

*You should evacuate in principle regardless of flood depth. (If there is no time to evacuate and it is dangerous to go outside, you should evacuate vertically)
*Please check the latest situation regarding open evacuation locations.