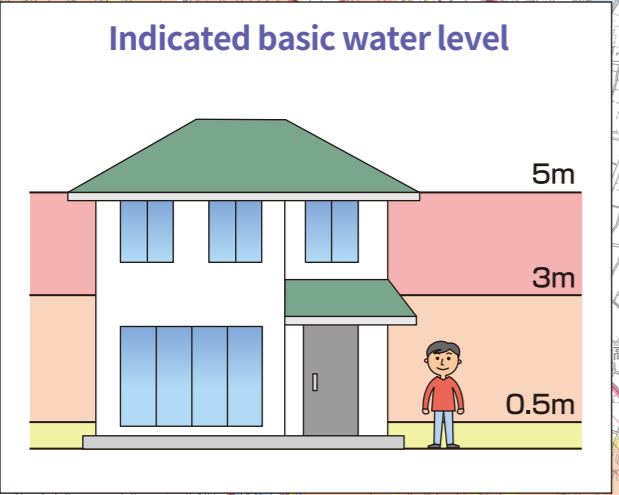
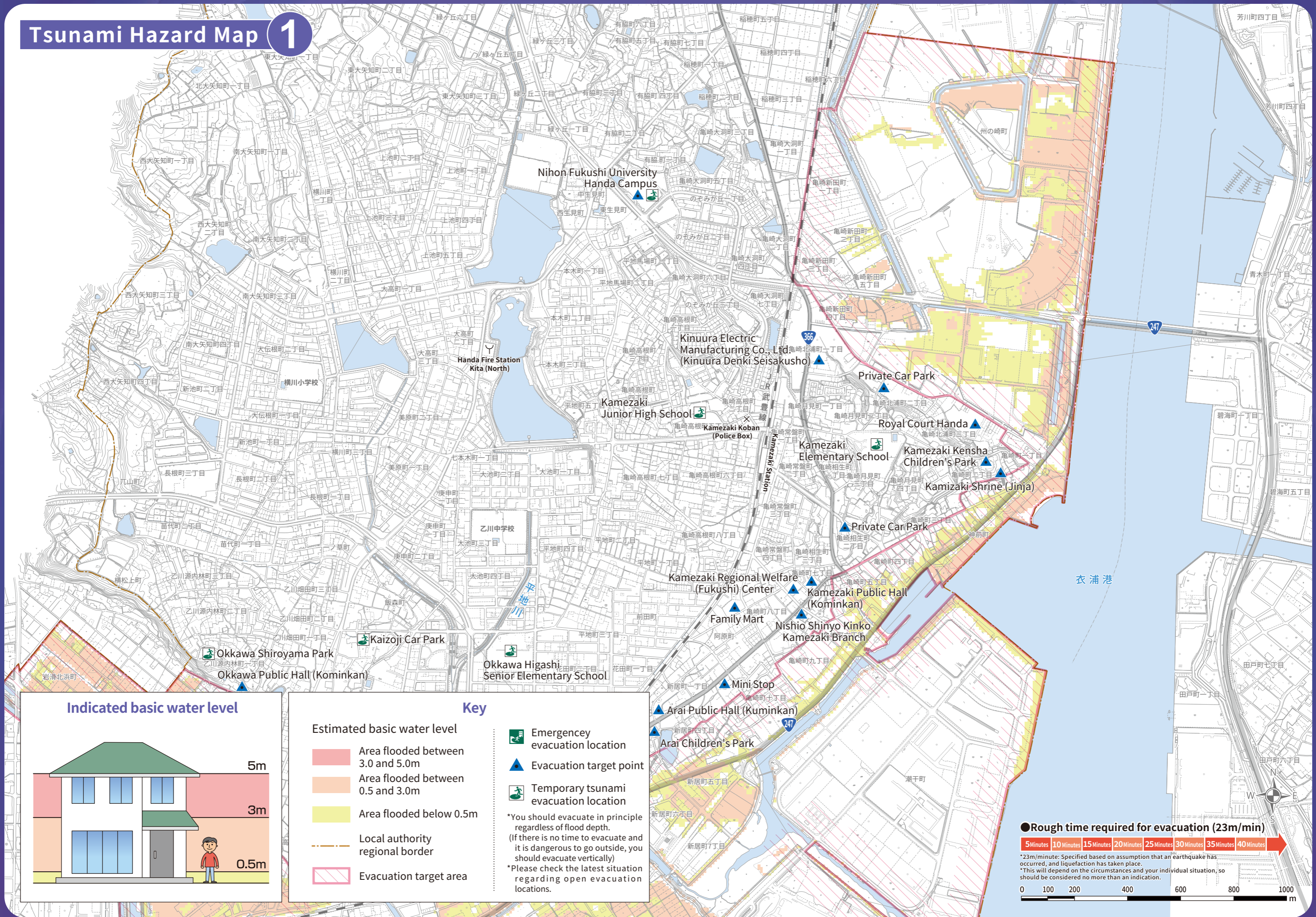


# Tsunami Hazard Map 1



### Key

- Estimated basic water level
  - Area flooded between 3.0 and 5.0m
  - Area flooded between 0.5 and 3.0m
  - Area flooded below 0.5m
- Local authority regional border
- Evacuation target area
- Emergency evacuation location
- Evacuation target point
- Temporary tsunami evacuation location

\*You should evacuate in principle regardless of flood depth. (If there is no time to evacuate and it is dangerous to go outside, you should evacuate vertically)  
\*Please check the latest situation regarding open evacuation locations.

### Rough time required for evacuation (23m/min)

5 Minutes 10 Minutes 15 Minutes 20 Minutes 25 Minutes 30 Minutes 35 Minutes 40 Minutes

0 100 200 400 600 800 1000 m

\*23m/minute: Specified based on assumption that an earthquake has occurred, and liquefaction has taken place.  
\*This will depend on the circumstances and your individual situation, so should be considered no more than an indication.