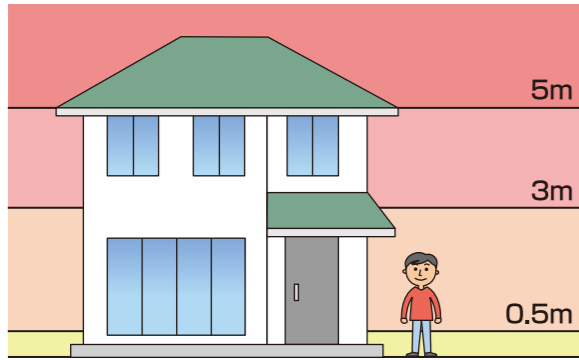


Flood Hazard Map

Whole area map

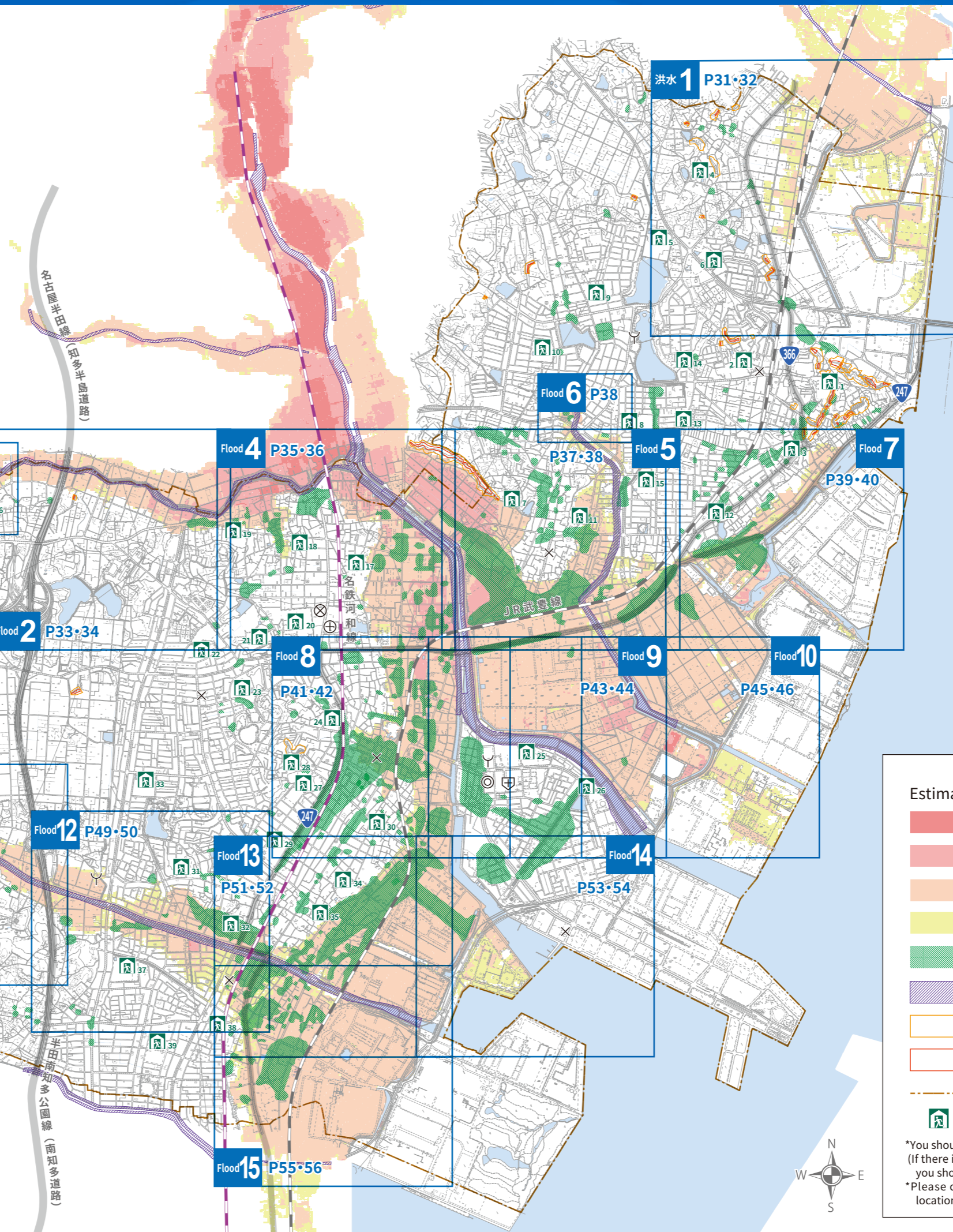
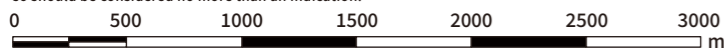
Indicated flood depth



Time required for evacuation (60m/min)



*60m/minute: Specified in reference to the speed at which elderly people can walk, based on past disaster experience.
*This will depend on the circumstances and your individual situation, so should be considered no more than an indication.



List of all evacuation centers

Number	Facility Name	Address
1	Kamezaki Elementary School	3-10 Tsukimi-cho, Kamezaki
2	Kamezaki Junior High School	5-40 Takane-cho, Kamezaki
3	Kamezaki Public Hall (Kominkan)	7-96-1 Kamezaki-cho
4	Ariwaki Public Hall (Kominkan) / Ariwaki Elementary School	5-1-1 Ariwaki-cho
5	Handa Higashi High School	30 Nishihaemi-cho
6	Nihon Fukushi University Handa Campus	26-2 Higashi Haemi-cho
7	Okkawa Public Hall (Kominkan)	3-59-1 Nishinomiya-cho, Okkawa
8	Okkawa Junior High School	3-1 Oike-cho
9	Kamiike Public Hall (Kominkan)	5-44-1 Kamiike-cho
10	Yokogawa Elementary School	1-11-1 Odenne-cho
11	Okkawa Elementary School	1-1 Kitagawa-cho, Okkawa
12	Arai Public Hall (Kominkan)	2-63 Arai-cho
13	Hirachi Public Hall (Kominkan)	2-50-1 Hirachi-cho
14	Takane Kindergarten	5-30-2 Hirachi-cho
15	Okkawa Higashi Senior Elementary School	3-1 Hanada-cho
16	Shuno Public Hall (Kominkan)	7-43 Hirai-cho
17	Handa Senior High School	5-80 Yanabe Higashimachi
18	Yanabe Public Hall (Kominkan)	5-20 Yanabe Nakamachi
19	Yanabe Elementary School	5-55 Yanabe Takayama-cho
20	Handa Senior High School	1-30 Deguchi-cho
21	Handa Agricultural (Nogyo) Senior High School	1-1 Hiiragi-cho
22	Handa Koka Senior High School	3-1 Hiiragi-cho
23	Kariyado Elementary School	1-5-2 Seishiro-cho
24	Kariyado Hall	1-22-1 Kariyado-cho
25	Sakura Elementary School	1-12-1 Toyo-cho
26	Mizuho Memorial Hall (Kinenkan)	3-1-6 Mizuho-cho
27	Handa Shogyo Senior High School	2-30 Hakusan-cho
28	Kyowa Public Hall (Kominkan)	4-122 Hakusan-cho
29	Narawa Junior High School	3-8 Showa-cho
30	Kyowa Public Hall (Kominkan)	2-112 Kyowa-cho
31	Nishi Narawa Public Hall (Kominkan)	4-106-8 Miyamoto-cho
32	Nishi Narawa Public Hall (Kominkan)	2-104 Togo-cho
33	Miyaike Elementary School	2-1-1 Minami Futatsuzaka-cho
34	Narawa Elementary School	2-1 Narawa Honmachi
35	Narawa Public Hall (Kominkan)	4-5 Narawa Honmachi
36	Itayama Elementary School	37-1 Yomogi-cho
37	Aoyama Junior High School	5-6-1 Aoyama
38	Godou Public Hall (Kominkan)	1-12-2 Hanazono-cho
39	Hanazono Elementary School	3-5-1 Hanazono-cho

*Does not include designated evacuation centers that may be at risk of partial or full flooding.

Key

Estimated flood depth

- Area flooded between 5.0 and 10.0m
- Area flooded between 3.0 and 5.0m
- Area flooded between 0.5 and 3.0m
- Area flooded below 0.5m

- Past floods *Combination of flooded areas in 1990, 1991, 1994 and 2000 (Tokai Floods) (includes inland flooding)
- Estimated flood area with danger to buildings etc. (river bank erosion)
- Areas in danger of damage from landslides
- Areas in particular danger of damage from landslides
- Local authority regional border
- Evacuation location

*You should evacuate in principle regardless of flood depth. (If there is no time to evacuate and it is dangerous to go outside, you should evacuate vertically)
*Please check the latest situation regarding open evacuation locations.

